

# PD1022

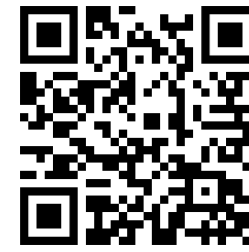
## 2MP Network PTZ Dome Camera

### Quick Start Guide

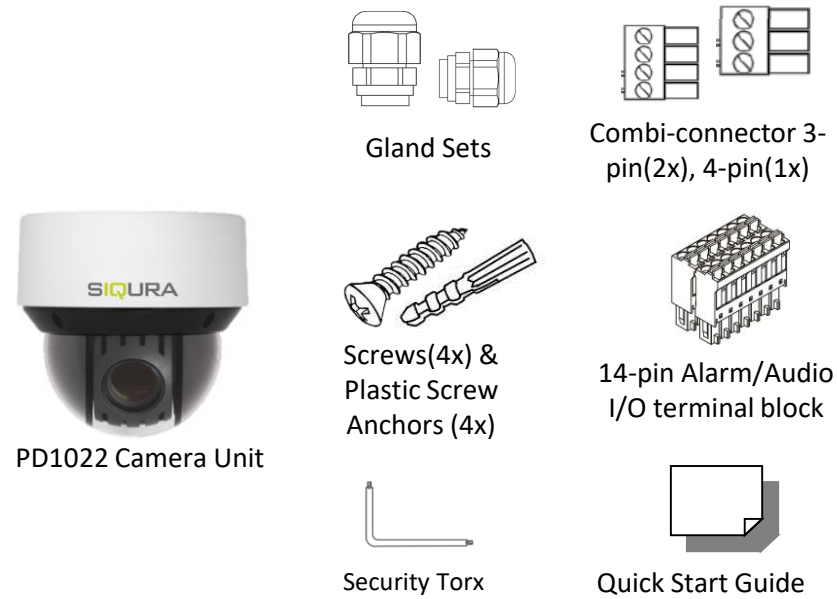


Find additional manuals, the datasheet, the EU Declaration of Conformity, and the latest firmware for this product at:

[Siqura.com/downloads/software](http://Siqura.com/downloads/software)



### Unpack



**Note 1:** Subject to modification. Actual product and accessories may differ in appearance.

### Installation Notices



**CAUTION:**  
 INSTALLATION SHALL BE PERFORMED BY QUALIFIED PERSONNEL ONLY. INSTALLATION SHALL BE IN ACCORDANCE WITH LOCAL PROCEDURES. INSTALLATION WITH POE SHALL BE IN UNEXPOSED NETWORKS. BATTERY REPLACEMENT SHALL NOT BE APPLIED IN VIEW OF THE RISK OF EXPLOSION.  
 IF YOU USE AN EXTERNAL POWER SUPPLY, CONTACT SIQURA TO MAKE SURE THAT THE POWER SUPPLY HAS THE PROPER POWER SPECIFICATIONS. MAKE SURE THAT THE POWER SUPPLY COMPLIES WITH LPS REQUIREMENTS. WHEN INSTALLING THE CAMERA, HOOK UP THE CAMERA WITH THE ANTI-DROP CHAIN OF THE PENDANT TO THE ANTI-DROP RING (SEE FIGURE 1). FOR MORE INFORMATION, CONTACT SIQURA.

### Connectors

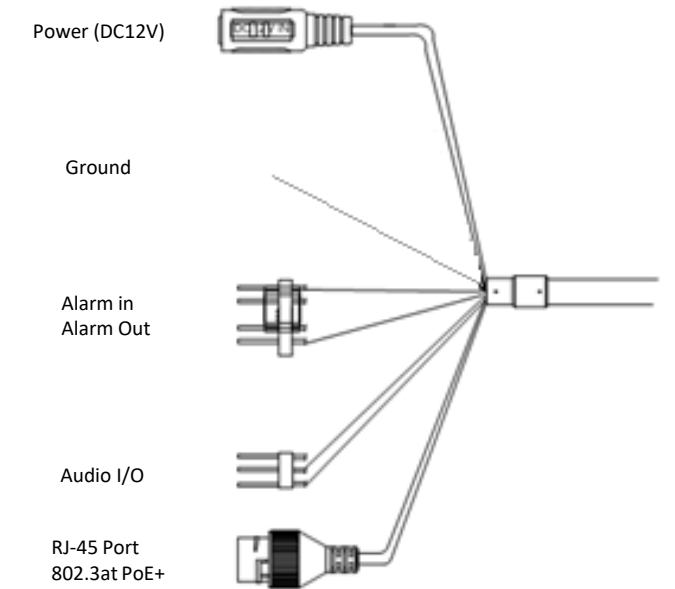
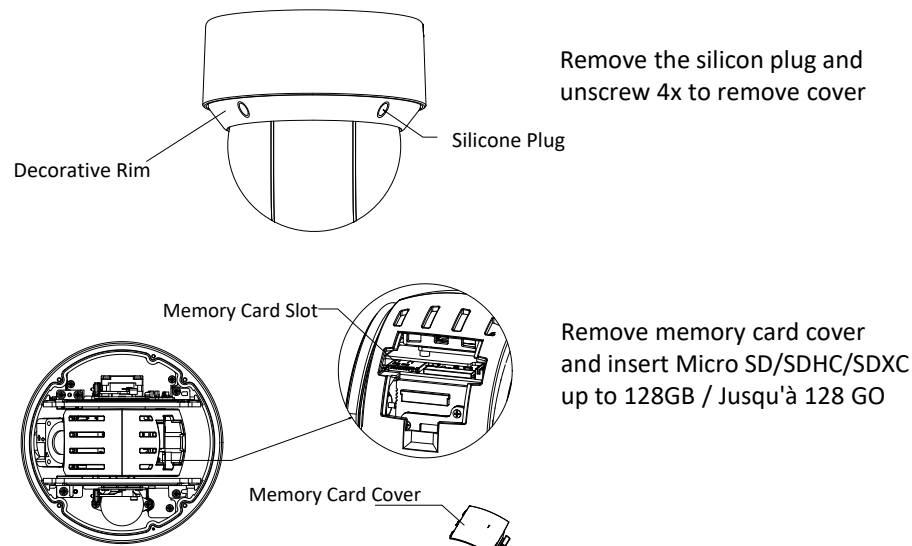


Figure 2 Camera Connectors

### Connector - Micro SD Slot



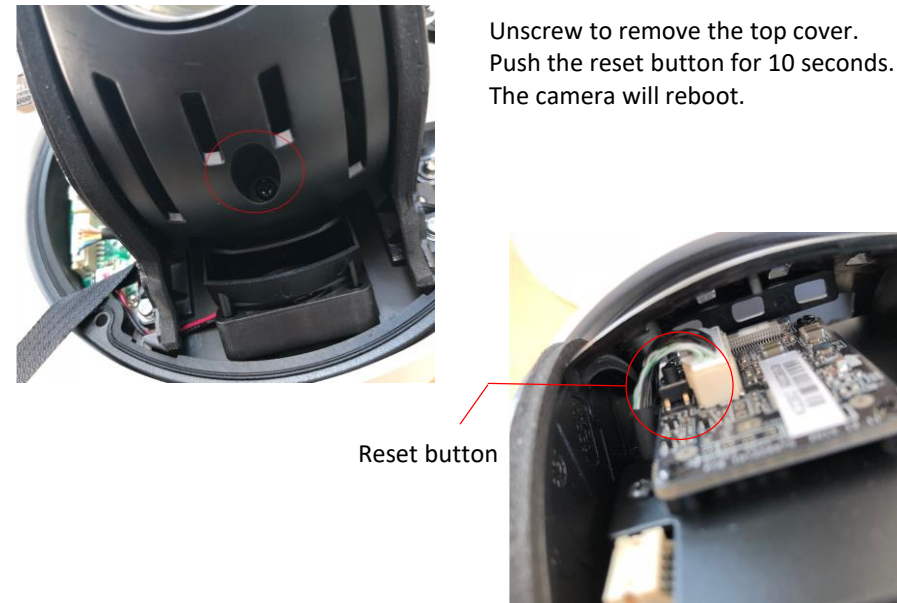
Remove the silicon plug and unscrew 4x to remove cover

Remove memory card cover and insert Micro SD/SDHC/SDXC up to 128GB / Jusqu'à 128 GO



**NOTE:**  
 IT IS NOT RECOMMENDED TO CONTINUOUSLY (24/7) RECORD WITH THE MICRO SD CARD, AS THE CAMERA MAY NOT SUPPORT LONG-TERM CONTINUOUS DATA READ/WRITE. CONTACT THE MANUFACTURER OF THE MICRO SD CARD FOR INFORMATION REGARDING THE RELIABILITY AND THE LIFE EXPECTANCY.

### Connector - Reset Button

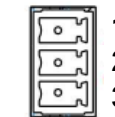


Unscrew to remove the top cover. Push the reset button for 10 seconds. The camera will reboot.

Reset button

### Audio I/O and Alarm Connection

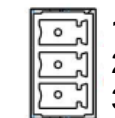
#### Audio I/O



Pin	Definition
1	Audio Output
2	GND
3	Audio Input

Table 2 Pin definition for Audio I/O

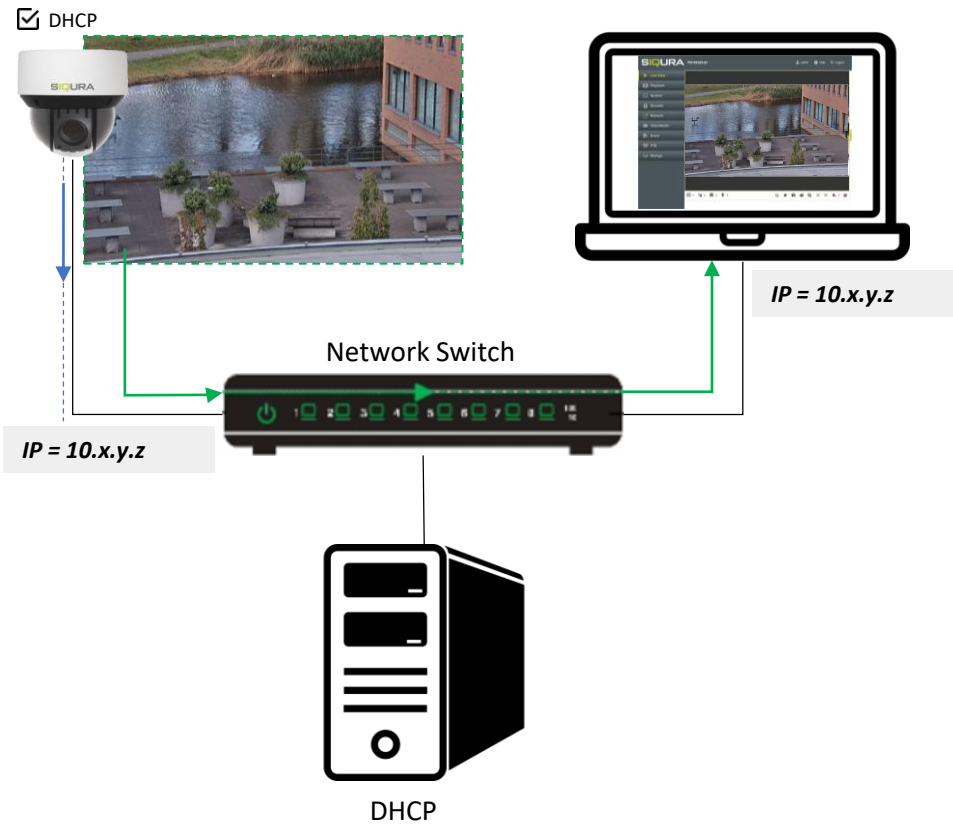
#### Alarm Input & Output



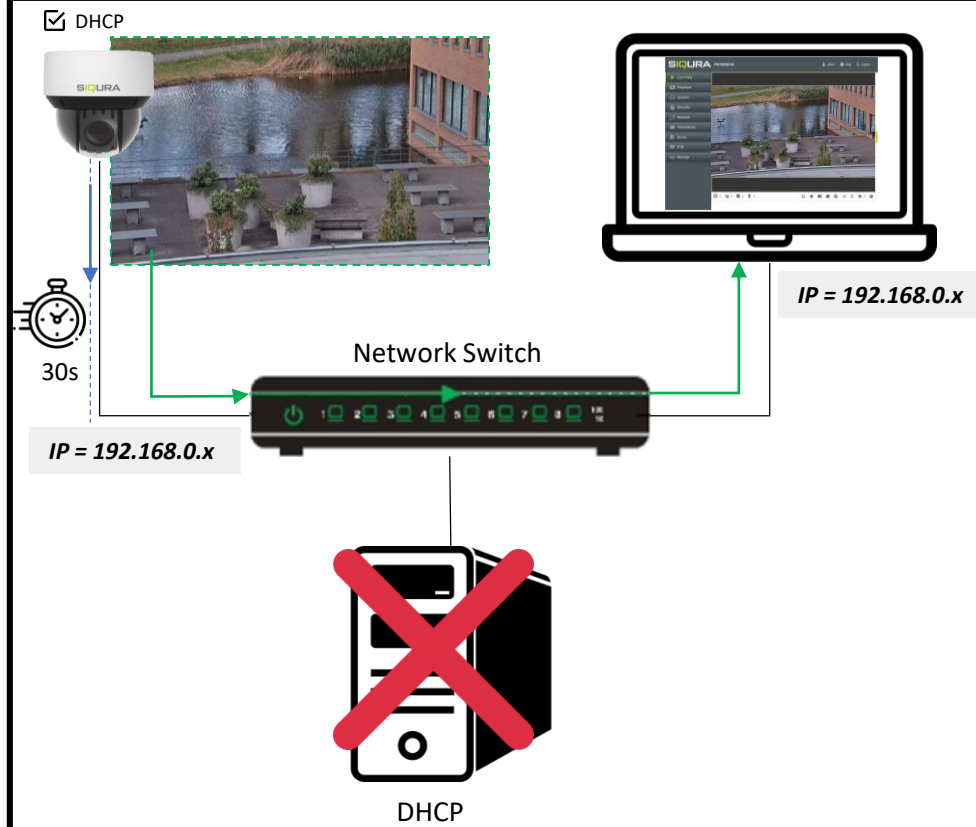
Pin	Definition
1	GND
2	Alarm in 2
3	Alarm in 1
4	Alarm Out2
5	COM 2
6	Alarm Out1
7	COM 1

Table 3 Pin definition for Alarm Input & Output

## Accessing the camera - DHCP Server



## Accessing the camera – Fixed IP address



## Auto detect with SDM2



## 1<sup>st</sup> time camera login

Set a strong password

Activation

User Name admin

Password

Valid password range [8-16]. You can use a combination of numbers, lowercase, uppercase and special character for your password with at least two kinds of them contained.

Confirm

OK

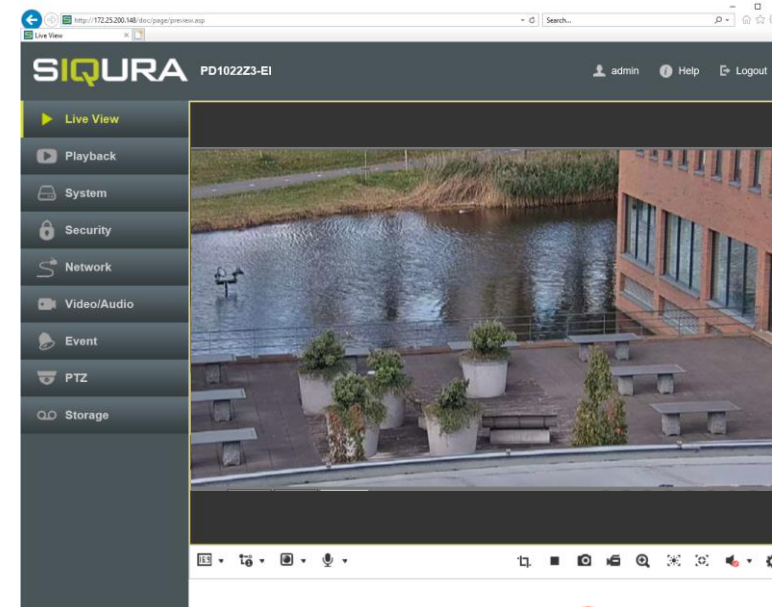
qwer1234



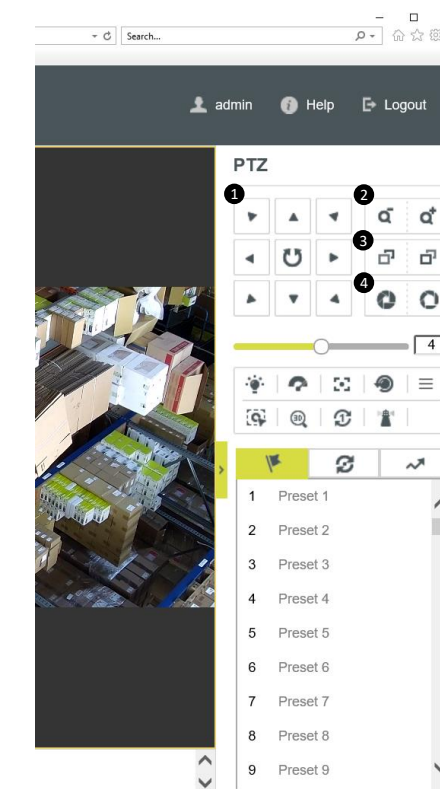
x6W@oM0a!9#F



## Browser-based Viewer



## Pan/Tilt/Zoom Control



No	Definition
1	Pan/Tilt/Rotation
2	Zoom
3	Focus
4	Iris