

# BC920

3MP box camera, H.265/H.264/MJPEG, P-Iris, SFP

## Quick Start Guide

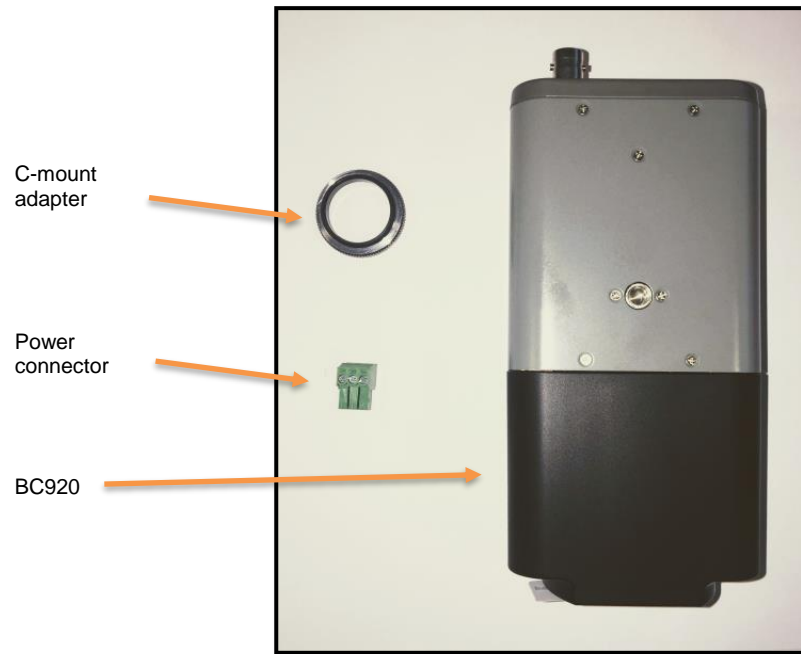


Find the latest information, firmware and documentation at:

siqura.com



### Unpack



Note 1: Subject to modification. Actual product and accessories may differ in appearance.

### Installation notices



#### CAUTION:

INSTALLATION SHALL BE PERFORMED BY QUALIFIED PERSONNEL ONLY.

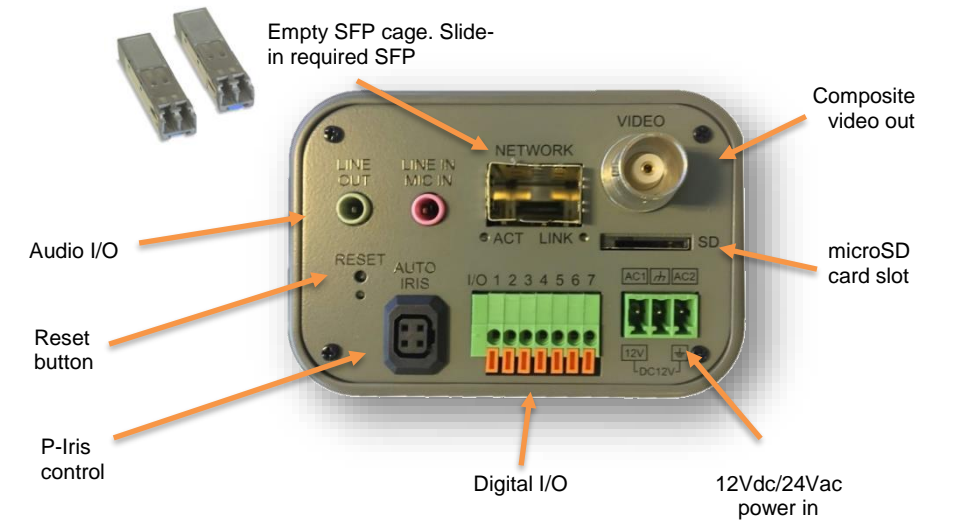
CONNECT POE TO UNEXPOSED NETWORKS.

INSTALLATION SHALL BE IN ACCORDANCE WITH LOCAL PROCEDURES.

THE CAMERA CONTAINS IRREPLACEABLE BATTERIES, DISPOSE OF THE CAMERA IN ACCORDANCE WITH LOCAL REGULATIONS.

IF YOU USE AN EXTERNAL POWER SUPPLY, CONTACT SIQURA TO MAKE SURE THAT THE POWER SUPPLY HAS THE PROPER POWER SPECIFICATIONS.

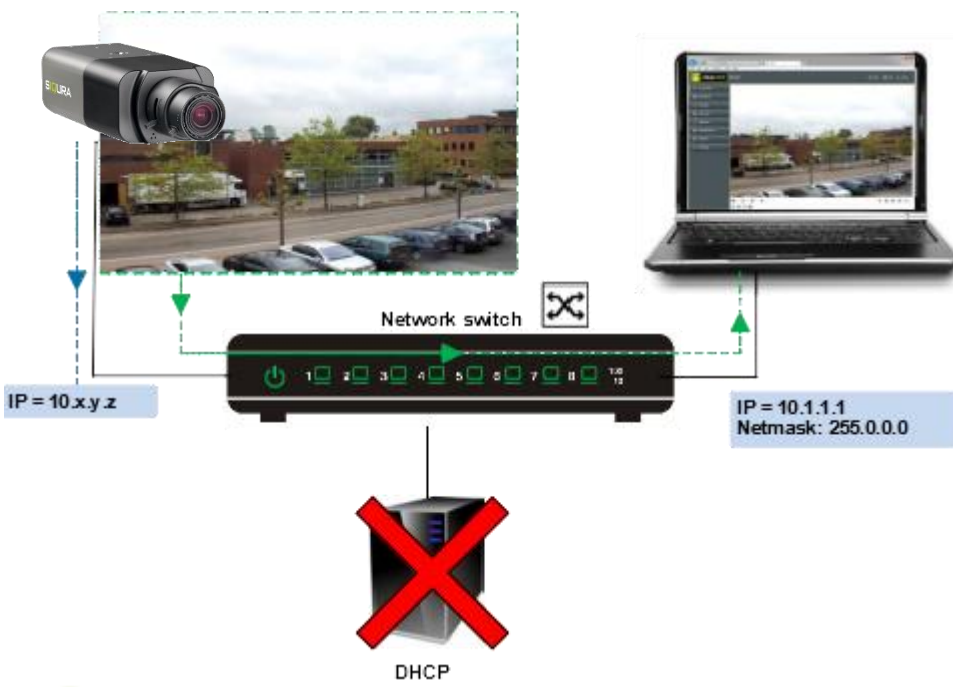
### Connectors and reset button



#### NOTE:

IT IS NOT RECOMMENDED TO CONTINUOUSLY (24/7) RECORD ON THE MICRO SD CARD, AS THE CARD MAY NOT SUPPORT LONG-TERM CONTINUOUS DATA READ/WRITE. CONTACT THE MANUFACTURER OF THE MICRO SD CARD FOR INFORMATION ABOUT THE CARD'S RELIABILITY AND LIFE EXPECTANCY.

### Accessing the camera

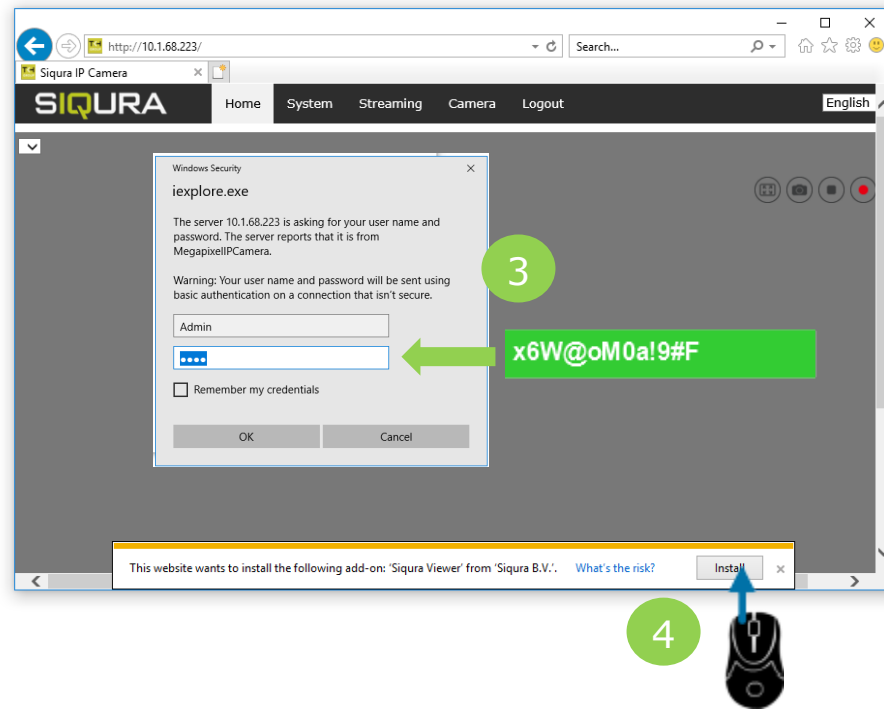


Use Device Manager (see next) to discover the camera on the network.

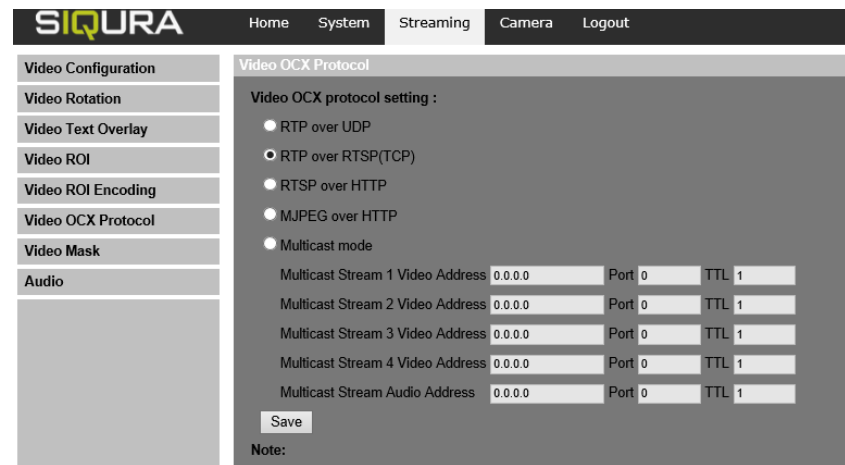
### Auto-detect with SDM2

### 1st time camera login

## Install browser-based viewer



## Set OCX Protocol



If the IE web interface is not showing video you might need to open your firewall or set the OCX protocol to RTP-over-RTSP(TCP)

## Using the Web Viewer

